

City of Hawthorne

(completed July 2012)



#MR312.03 - Rosecrans Ave Arterial Improvements from I-405 southbound off-ramp to Isis Ave -

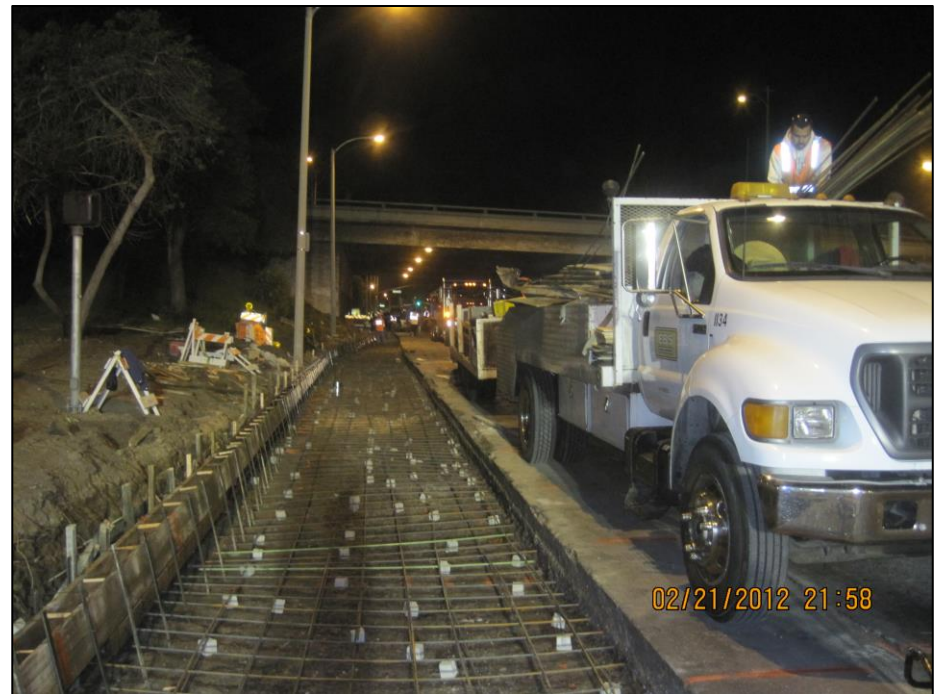
This project widened Rosecrans Avenue to accommodate a south bound off-ramp receiving lane.



BEFORE



AFTER





**Project is complete!
(North bound views of Rosecrans, west of I-405)**